

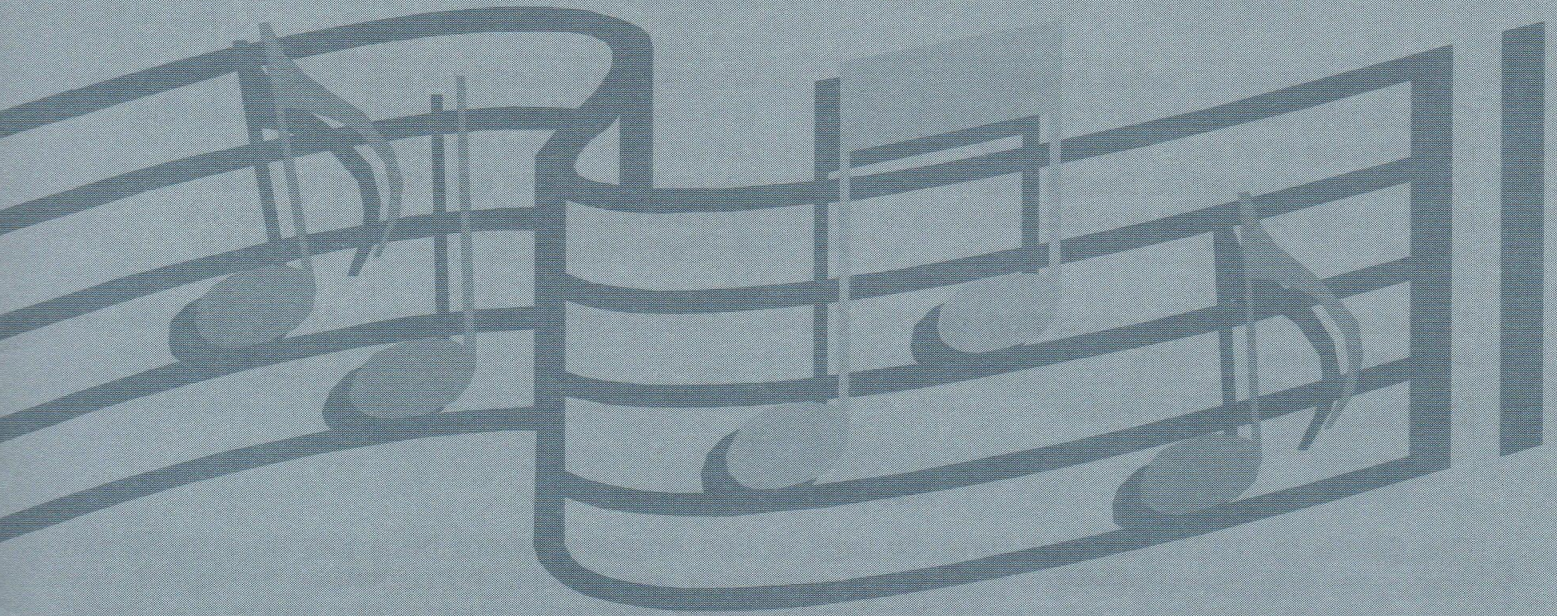
UBI CARITAS
Gjeilo

SATB, unaccompanied

HL08501631
WW1386
US \$1.90

UBI CARITAS

SATB Chorus a cappella



Music by
Ola Gjeilo

*Celebrating
50 years of timeless choral music*



waltonmusic.com

About the Work

Ubi Caritas has been one of my most performed and popular pieces since it was written in 2001, and I am thrilled that the work is now available for American choirs through Walton Music. As with Maurice Durufle's beautiful *Ubi Caritas* from 1960, this setting also draws inspiration from the Gregorian chant tradition. While reflective of the chant style, this composition is entirely original and is not based on any existing chants.

Ubi Caritas received its North American premiere at the 2007 ACDA National Convention in Miami, where it was performed by the exciting new Swedish professional choir, Voces Nordicae. The piece is dedicated to this outstanding ensemble and its wonderful conductor, Lone Larsen.

— Ola Gjeilo

*Ubi caritas et amor, Deus ibi est.
Congregavit nos in unum Christi amor.
Exsulemus et in ipso jucundemur.
Timeamus et amemus Deum vivum.
Et ex corde diligamus nos sincero.
Amen.*

Where charity and love are, God is there.
The love of Christ has gathered us together.
Let us rejoice and be glad in it.
Let us revere and love the living God.
And from a sincere heart let us love one
another. Amen.

To hear a full length recording of *Ubi Caritas*, please visit the Walton Music website at www.waltonmusic.com.

Duration: Approx. 3 minutes

About the Composer

Ola Gjeilo (b. 1978, Norway) currently lives in Los Angeles, where he works as a freelance composer and concert/recording artist. A composer and pianist, he continues to explore his own musical language, influenced by classical, jazz and folk music. His music has been performed in the United States, Canada, the United Kingdom, South Africa, Norway, Sweden, Denmark, Finland, Germany, Hungary, France and Belgium, and has been published in the US, the UK and Norway. He has been commissioned by prestigious ensembles and artists such as Philip Brunelle (Director, VocalEssence), Ensemble Mendelssohn, Uranienborg Vokalensemble, Arielle Rodgers, Norges Kirkesangforbund, Akademiska Damkören Lyran and Con Amore, and he has written a song cycle, *New England Songs*, for American soprano Barbara Bonney.

Gjeilo studied at the Norwegian Academy of Music and the Royal College of Music in London, and recently completed his Master's degree in composition at The Juilliard School. He is the recipient of the Gretchaninoff Memorial Prize and was a winner of the 2005 Juilliard Composers' Orchestral Work Competition. His winning piece, *The Identity Triad*, was performed by the Juilliard Orchestra at New York's Alice Tully Hall. In 2006, his song *If thou must love me* won the Diana Barnhart American Song Competition.

For more information about Ola Gjeilo and his music, please visit his website at www.olagjeilo.com.

Choral works by Ola Gjeilo:		To Order:
WW1352	<i>Hark! a Herald Voice Is Calling</i>	SATB divisi Choir, a cappella HL08501569
WW1375	<i>Nisi Dominus</i>	SATB divisi Choir, a cappella HL08501590
WJMS1093	<i>Prelude</i>	SATB divisi Choir, a cappella HL08501649

Dedicated to Lone Larsen and Voces Nordicae

UBI CARITAS

SATB Unaccompanied

OLA GJEILO

Soprano
U - bi ca - ri - tas et a - mor, De - us i - bi est.

Alto
Con - gre -

Piano (for rehearsal only)
p

♩ = 52

S.
Chris - ti a - mor. U - bi

A.
ga - vit nos in u - num Chris - ti a - mor. U - bi

T.
U - bi

B.
U - bi

5

9

S. ca - ri - tas et a - mor, — De - us i - bi est. Con - gre - ga - vit nos — in

A. ca - ri - tas et a - mor, — De - us i - bi est. Con - gre - ga - vit nos — in

T. ca - ri - tas et a - mor, — De - us i - bi est. Con - gre - ga - vit nos — in

B. ca - ri - tas et a - mor, — De - us i - bi est. Con - gre - ga - vit nos — in

13

S. u - num Chris - ti a - mor, Chris - ti a - mor. Ex - sul - *mf* = 58

A. u - num Chris - ti a - mor, Chris - ti a - mor. Ex - sul - *mf*

T. u - num Chris - ti a - mor, Chris - ti a - mor. Ex - sul - *mf*

B. u - num Chris - ti a - mor, Chris - ti a - mor. Ex - sul - *mf*

13

mf = 58

17 *cresc. poco a poco*

S. te-mus et in ip-so ju-cun - de - mur. Ti-me - a - mus— et a - me-mus

A. *cresc. poco a poco*
te-mus et in ip-so ju-cun - de - mur. Ti-me - a - mus— et a - me-mus

T. *cresc. poco a poco*
te-mus et in ip-so ju-cun - de - mur. Ti-me - a - mus et a - me-mus

B. *cresc. poco a poco*
te-mus et in ip-so ju-cun - de - mur. Ti-me - a - mus— et a - me-mus

20 *ff*

S. De-um vi - vum. Ex-sul - te-mus et in ip-so ju-cun - de - mur. Ti-me -

A. *ff*
De-um vi - vum. Ex-sul - te-mus et in ip-so ju-cun - de - mur. Ti-me -

T. *ff*
De-um vi - vum. Ex-sul - te-mus et in ip-so ju-cun - de - mur. Ti-me -

B. *ff*
De-um vi - vum. Ex-sul - te-mus et in ip-so ju-cun - de - mur. Ti-me -

20 *ff*

23

S. a - mus— et a - me - mus De - um vi - vum, ti - me - a - mus— et a - me - mus

A. a - mus— et a - me - mus De - um vi - vum, ti - me - a - mus— et a - me - mus

T. a - mus— et a - me - mus De - um vi - vum, ti - me - a - mus— et a - me - mus

B. a - mus et a - me - mus De - um vi - vum, ti - me - a - mus et a - me - mus

26

S. *dim.* De - um vi - vum, De - um vi - vum. *mf* Tempo I (♩ = 52) Et ex cor - de di - li - ga - mus

A. *dim.* De - um vi - vum, De - um vi - vum. *mf* Et ex cor - de di - li - ga - mus

T. *dim.* De - um vi - vum, De - um vi - vum, *mf* Et ex cor - de di - li - ga - mus

B. *dim.* De - um vi - vum, De - um vi - vum. *mf* Et ex cor - de di - li - ga - mus

26

mf Tempo I (♩ = 52)

29

S. *mp*
nos sin-ce - ro, et ex cor-de di - li - ga-mus nos sin-ce - ro.

A. *mp*
nos sin-ce - ro, et ex cor-de di - li - ga-mus nos sin-ce - ro.

T. *mp*
nos sin-ce - ro, et ex cor-de di - li - ga-mus nos sin-ce - ro.

B. *mp*
nos sin-ce - ro, et ex cor-de di - li - ga-mus nos sin-ce - ro.

32

S. *p*
U - bi ca - ri - tas et a - mor, De - us

A. *p*
U - bi ca - ri - tas et a - mor, De - us

T. *p*
U - bi ca - ri - tas et a - mor, De - us

B. *p*
ca - ri - tas et a - mor, De - us

36

S. i - bi est. Con-gre - ga - vit nos — in u - num Chris-ti a - mor,

A. i - bi est. Con-gre - ga - vit nos — in u - num Chris-ti a - mor,

T. i - bi est. Con-gre - ga - vit nos — in u - num Chris-ti a - mor,

B. i - bi est. Con-gre - ga - vit nos — in u - num Chris-ti a - mor,

40

S. *pp* Chris-ti a - mor. A - - - men. rit.

A. *pp* Chris-ti a - mor. A - - - men.

T. *pp* Chris-ti a - mor. A - - - men.

B. *pp* Chris-ti a - mor. A - - - men.



EXCLUSIVELY DISTRIBUTED BY
HAL LEONARD
 CORPORATION
 7777 W. BLUEMOUND RD., P.O. BOX 13819 MILWAUKEE, WI 53218